

HiGUARD

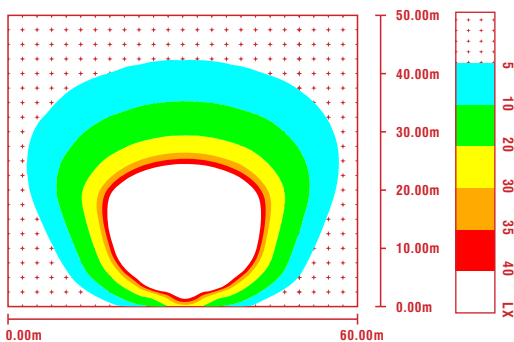
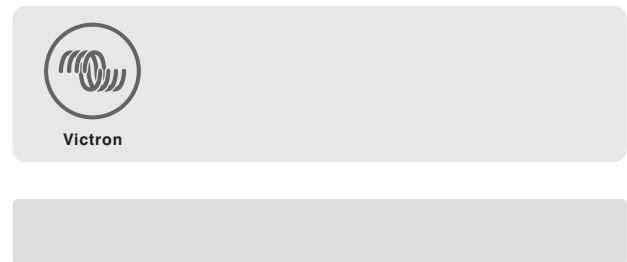
Mobile Light Tower



SPECIFICATION

BL1P-L4MHL200	
Solar Panel	1 × 435W
Panel Lifting	0°~90° Manual Lifting
LFP Battery	1 × 200Ah DC12.8V
Battery Capacity	2560Wh 95% DoC
System Voltage	DC12V
Battery Charger	Optional
LED Lamp	2 × 100W,30000Lms
Lighting Area (5 Lux)	1013m ²
Rotation	/
Tilt	/
Controller	40A MPPT
Mast & Height	4 Sections 4M
Mast Lifting	Manual Winch
Trailer Standard	/
Hitch	/
Brake	/
Axle	/
Tire	/
Outriggers	Optional
Lifting Ring	4 ×
Forklift Holes	4 ×
Working Temp	-20°C~50°C
Charging Time	5.9 hours
Running Time	12.2 hours
Dimension(mm)	1000*1000*2900
Weight	400kgs
QTY in 20' / 40'	10 units / 20 units

OPTIONAL



CONTAINER LOADING

20' | 10 units



40' | 20 units

